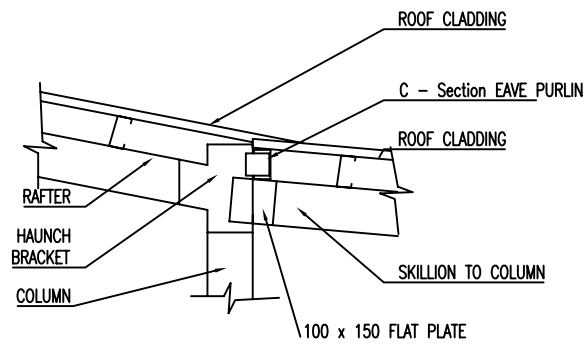
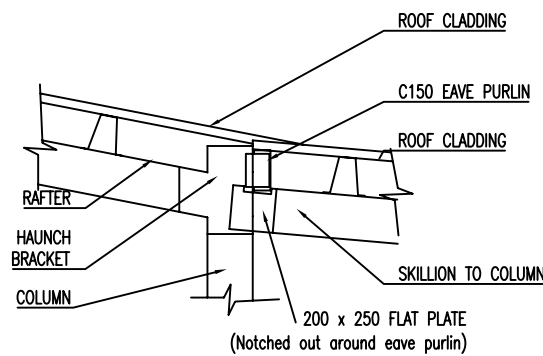


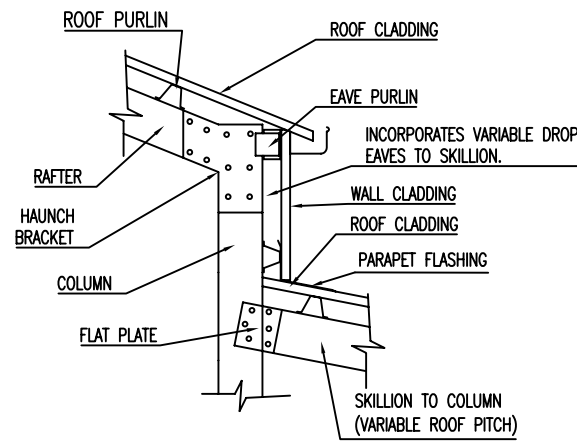
C150 FRAME/TOPSPAN 60 PURLINS & GIRTS.



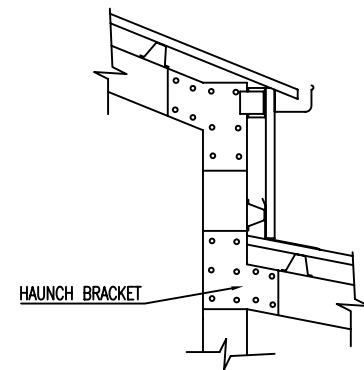
C150 FRAME/Z100 PURLINS & GIRTS, C100 EAVE PURLIN.



C250 FRAME/TH120 PURLINS & GIRTS, C150 EAVE PURLIN.



STEP DOWN CONNECTION - OPTION 1 (FLAT PLATE)



**STEP DOWN CONNECTION
OPTION 2 (HAUNCH BRACKET)**

SKILLIONS > 3.6m Span require End Wall Mullion same dimension as column.
 SKILLIONS > 3.6m Span using TH60 must incorporate end wall mullions.
 SKILLIONS > 6.0m Span using TH120 must incorporate end wall mullions.

OPTIONS

Side Wall of Skillions may be: Fully clad, skirting clad or unclad, with gutter attached directly to 'C' section Eaves Purlin.
 End Walls may be fully clad, unclad, or partly clad.
 Doors and Windows may be installed to Side & End Walls.
 Footings or slab Details to be the same as the main building.

NOTE:
 WALL CLADDING MUST BE 'SLOTTED' TO ALLOW FLAT PLATE CONNECTION BRACKET TO PASS THROUGH FROM COLUMN TO SKILLION RAFTER.

UK ONLY

NOTE:
 This plan must be read in conjunction with sheets 1 through 5.
 Sheet 2 of 5 should be used as the Member Schedule, indicating the size of section required and the appropriate connection detail.